

# HIGH QUALITY VOIP NETWORKING SOLUTIONS



FOUNDRY NETWORKS PROVIDES THE INDUSTRY'S MOST SCALABLE AND RELIABLE FAMILY OF CHASSIS AND STACKABLE VOIP NETWORKING INFRASTRUCTURE PRODUCTS. FOUNDRY'S VOIP NETWORKING SOLUTIONS PROVIDE SUPPORT FOR A BROAD RANGE OF BEST-OF-BREED AND LOW-COST IP TELEPHONY EQUIPMENT.

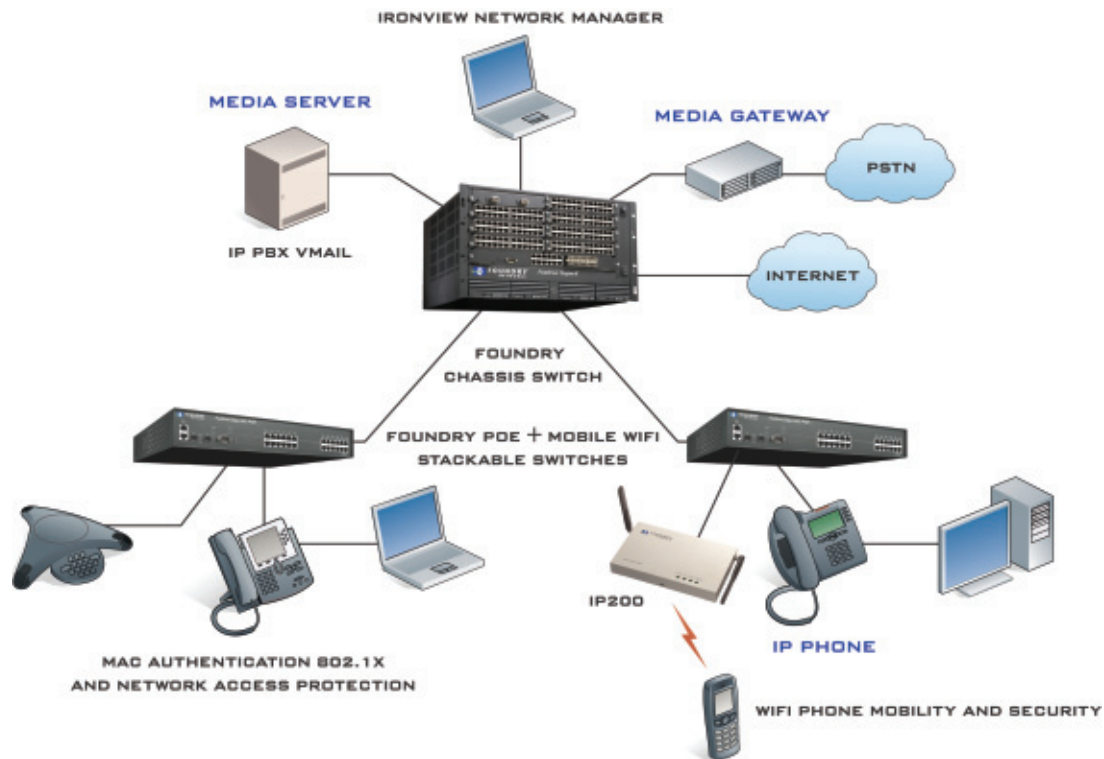
## INTEROPERABLE VOIP NETWORKING INFRASTRUCTURE PRODUCTS

Foundry VoIP switching architecture provides the highest performance, lowest-latency solution on the market, with guaranteed call quality for your VoIP traffic. Our wire-speed traffic prioritization capabilities eliminate packet-loss and ensures VoIP traffic gets through loud and clear, even when there's high-volume data traffic. Our ASIC based QoS enforcement not only provides the industry's lowest latency switching, but does so without compromising performance.

Foundry provides a rich set of QoS services for both Layer 2 and Layer 3 traffic, including support for DSCP, 802.1p, QoS marking & remarking, ToS, and DiffServ. Our hardware based access control list and rate limiting features insure that voice traffic is given the highest priority and is never disrupted by data traffic. With automated voice discovery capability and QoS support, switches can dynamically discover IP phones. It places them in the proper Voice VLAN and automates QoS, eliminating the manual work required to install and provision VoIP services.

Both Foundry's stackable and chassis products fully support the 802.3af Power over Ethernet (PoE) standard, with integrated and redundant PoE power capabilities that are affordable, reliable, and effective. Our PoE networking solutions include support for legacy non-802.3af compliant devices. They are configurable on a per-port basis and include our unique smart ports feature, which delivers proper wattage even if manually misconfigured. We also provide PoE modules for our award-winning Jetcore products, including the FastIron and BigIron chassis products. For legacy equipment without PoE support, Foundry provides an inline power injector unit that delivers full 802.3af power to your IP phones.

Foundry provides a suite of Layer 4-7 intelligent traffic management and load-balancing solutions. They deliver high-availability and security for both enterprise and service provider SIP telephony servers. With our Layer 2/3 and Layer 4-7 networking products, Foundry not only secures your VoIP infrastructure from DoS attacks, but also supports MAC and 802.1x authentication for integrated PC and IP phone support. It even provides dual-mode tagged and untagged VLAN support for maximum management flexibility.



Foundry is focused on delivering both wireline and wireless IP telephony support, including support for Layer 2/3 wireless mobility solutions. Foundry's stackable and chassis solutions support the addition of scalable, low-cost wireless mobility software, and our IP200 wireless access point supports IEEE 802.11e QoS and the Wifi Alliance's WMM (Wireless Multimedia). The IP200 can support a number of wireless IP telephony handsets.

Validating the interoperability of Foundry's VoIP solutions, our customers seamlessly integrate Foundry Layer 2/3 switches with a diverse array of IP telephony equipment. Our VoIP architecture is fully compatible with Alcatel, Cisco, Lucent, Nortel, and Sphere. Foundry's best-of-breed IP telephony partners include Avaya, Mitel, Shortel, and Siemens. Foundry's products empower our customers with the flexibility to configure their VoIP network

infrastructure as needed. That is the Power of Foundry; and the Power of Performance. Foundry's worldwide Layer 2/3 switch partners and a variety of other IP telephony vendors include: Alcatel, Cisco, Lucent, Nortel and Sphere.

### ABOUT FOUNDRY NETWORKS

Foundry Networks, Inc. (Nasdaq: FDRY) is a leading provider of high-performance enterprise and service provider switching, routing and Web traffic management solutions including Layer 2/3 LAN switches, Layer 3 Backbone switches, Layer 4-7 application switches, Wireless LAN and access points, access routers and Metro routers. Foundry's 8,100 customers include the world's premier ISPs, Metro service providers, and enterprises including e-commerce sites, universities, entertainment, health and wellness, government, financial, and manufacturing companies.



**Foundry Networks, Inc.**  
 Corporate Headquarters  
 2100 Gold Street  
 P.O.Box 649100  
 San Jose, CA 95164-9100

U.S. and Canada Toll-free:  
 1-888-TURBOLAN (887-2652)  
 Tel: +1 408.586.1700  
 Fax: +1 408.586.1900  
 info@foundrynet.com  
 www.foundrynetworks.com

Although Foundry has attempted to provide accurate information in these materials, Foundry assumes no legal responsibility for the accuracy or completeness of the information. More specific information is available on request from Foundry. Please note that Foundry's product information does not constitute or contain any guarantee, warranty or legal binding representation, unless expressly identified as such in duly signed writing.

© 2005 Foundry Networks, Inc. All Rights Reserved. Foundry Networks, AccessIron, BigIron, EdgeIron, FastIron, IronPoint, IronView IronWare, JetCore, NetIron, ServerIron, Terathon, TurboIron, and the "Iron" family of marks are trademarks or registered trademarks of Foundry Networks, Inc. in United States and other countries. All other trademarks are the properties of their respective owners.

FDRY\_DS-040\_VOIP\_2005\_06\_Rev01

